



Moving in and Furnishing your new Home





Moving In. A guide to furnishing your new home

Moving In

Moving into your first home can be a very difficult and expensive experience. All of our properties are unfurnished. You will need to buy any furniture that you need yourself.

To furnish a one bed room flat could cost around £1500 just buying the basics. The information in this booklet will help you get started and point you in the right direction of where to go to furnish your home.

Where do you go to obtain furniture

If you are buying new or second hand furniture, a good idea is to make a list of the items you are going to need. See page 6 for more information.

If you are on a tight budget, there are places that you can find good quality second hand furniture. There are also many second hand shops in the city and you may be able to pick up a bargain from them. If you do buy second hand electrical items ensure it has been tested and ask the shop if it has a guarantee and how long it is for. With small items, you may wish to buy one each time you receive your benefits or wages. There are many things that you will need that you probably have not thought about. Remember to shop around.



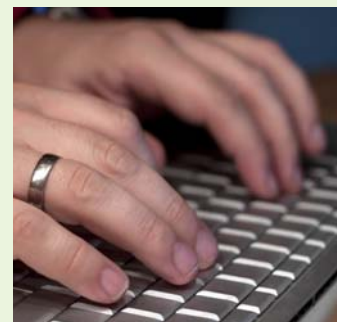
Community Transport based in Earlsdon have a wide variety of recycled furniture items available at reasonable prices. They also sell many electrical items such as washing machines, fridge/freezers and televisions which have been electrically tested. They are based at 269 Sovereign Road, Earlsdon, Coventry, CV5 6LT, Tel: 024 7669 1433. They are open from 9am to 4pm Monday to Friday. Free delivery for Whitefriars new tenants upon production of voucher attached.



Emmaus have a shop where they sell good quality second hand furniture. They are based at 70 Red Lane, Coventry, CV6 5EQ, Tel: 024 7666 1466. They are open 9.30am to 4.30pm Monday to Saturday. Free delivery for Whitefriars new tenants upon production of voucher attached.

2nd Chance Furniture Reuse based in Nuneaton have a large warehouse which sells good quality furniture, white goods and other household items. They are based at 1a Weddington Terrace, Nuneaton, CV10 0AG, Tel: 024 7632 6189. Free delivery for Whitefriars new tenants upon production of voucher attached.

The Recycle Warehouse based in Leamington Spa is a second hand goods shop selling a wide variety of used items. They are based at Princes Drive Recycling Centre, Princes Drive, Leamington Spa, CV31 3PH, Tel: 01926 426369. This is open 7 days per week 10am to 4pm. They also have another outlet at The Re-useful Centre, 5 Ramsey Road, Sydenham, Leamington CV31 1PL Tel: 01926 453030. Open Friday to Sunday 10 - 4pm.



Check the classified adverts in the Coventry Telegraph and other local shops. The internet also offers several websites where you can find free or low cost furniture. Check out the following websites.

www.freebay.co.uk

www.gumtree.co.uk

Social Fund Applications

If you have no money or a limited amount to buy essential items you may be entitled to get some money to help you move in and furnish your new home. Here is a list of grants or loans you may be able to apply for.

Budgeting Loan

Budgeting Loans help you spread the cost of things you need to buy. You can use a Budgeting Loan to help pay for:

- furniture and household items
- clothes and footwear
- rent upfront or removal costs to get to a new place
- hire purchase (HP) or other debts you may have in relation to the items above.

You may be able to get a Budgeting Loan if you get:

- Income Support
- income-based Jobseeker's Allowance
- income-related Employment and Support Allowance
- Pension Credit, or
- payment on account of one of these benefits, and
- you or your partner have been getting one of these benefits for at least 26 weeks

It could take up to 2 weeks for your claim to be processed.

Crisis Loan

You can apply for a Crisis Loan, even if you are not in receipt of any benefit. Your circumstances must be in crisis for the Social Fund to consider your application and there is no other way to prevent serious damage or serious risk to your health or safety. This is a loan and you will be required to pay this back at an agreed amount. It could take up to 2 weeks for your claim to be processed.



Community Care Grant

If you need financial help to live independently in the community or to ease exceptional pressure on you and your family you may be able to get a Community Care Grant. You do not have to pay it back

You can apply for a Community Care Grant if you are either:

- already getting Income Support, income-related Employment and Support Allowance, income-based Jobseeker's Allowance, Pension Credit, or payment on account of one of these benefits
- likely to start getting one of these benefits within the next six weeks because you are moving out of care

and any one of the following applies

- you are moving out of residential or institutional care to live independently
- you are moving to a new home which will be more suitable for you and are being resettled by an organisation like a local council or voluntary organisation

The Social Fund will only pay for high priority items e.g. something to sleep on, something to cook with, unless there is a very good reason why you need a certain household item. It could take up to 6 weeks for your claim to be processed.

Applying for a loan/grant

Contact the Job Centre Plus for more information on
Tel: 0800 055 6688 or 02476 232200 or via their website www.jobcentreplus.gov.uk

If you need help in making an application the Citizens Advice Bureau can assist you. They are based at Kirby House, Little Park Street, Coventry. www.coventrycab.org.uk. Tel: 024 7625 2052. Local advice agencies may also be able to help.



List of items



Here is a list of basic items you will probably need to buy to move into your new property.

Kitchen

- Cooker
- Tea Towels
- Cleaning Cloths
- Washing Up Liquid
- Washing Up Bowl
- Cleaning agents
- Fridge
- Washing Machine
- Cutlery
- Pots and Pans
- Plates and cups
- Waste Bin
- Tin Opener
- Toaster
- Microwave Oven
- Mop and Bucket

Bathroom

- Towels

Bedroom

- Bed
- Duvet
- Duvet Covers
- Pillows
- Sheets and Pillow Cases
- Chest of drawers
- Wardrobe

Living Room

- Sofa and chairs
- Television

General

- Iron
- Iron board
- Curtains
- Carpets
- Light bulbs

We would advise that you start as soon as possible getting items for your new property, so you won't be moving into your new property with nothing.

Free delivery voucher

Name: _____

Date of new tenancy: _____

Address of new property: _____

This voucher entitles the new tenant of Whitefriars free delivery of furniture or electrical items over £25 from the following outlets.

Community Transport 269, Sovereign Road, Earlsdon, Coventry.

Emmaus 70, Red Lane, Foleshill, Coventry.

2nd Chance Furniture Reuse 1A, Weddington Terrace, Nuneaton.

You must also bring evidence of the new address i.e. tenancy agreement, utility bill.

We offer a wide range of leaflets which detail our policies, procedures and good practice. These are available on request.

This document is about
Moving in & furnishing your new Home.
Need help in your own language?

French

Pour vous assister en votre
propre langue

Farsi

برای کمک به زبانتان

Portuguese

Assistencia na sura
propria lingua

Arabic

لمساعدتكم في لغتكم

Somali

Luqadaadoo lugugu caawinaayo


Kurdish

بۆیارمه تیدان به زمانی خوۆت

 024 7676 7000

Whitefriars Housing Offices


9 Little Park St,
City Centre,
Coventry

 024
7676 7111

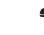
29-31 Riley Square,
Bell Green,
Coventry

 024
7670 8400

192 Torrington
Avenue,
Coventry

 024
7649 6700

St James Lane,
Willenhall,
Coventry

 024
7651 6700

Repairs Line (24hrs) 0845 850 6090

WEST MERCIA HOUSING GROUP



hardenhousing.co.uk



kemblehousing.co.uk



nexushousing.co.uk



whitefriarshousing.co.uk

www.wmhousing.co.uk

NW 1602_003